



GROUP TOUR SPRING SEASON UPDATES

FEBRUARY 5, 2020





INTRODUCTIONS: Today's Presenters

LINDSAY HILL

Senior Manager, Tourism Sales
Destination DC

DEANGELO BAYNES

Curbside Manager, Parking and Ground
Transportation Division
District Department of Transportation

BRANDON BUCHANAN

Director of Regulatory Affairs
American Bus Association



NATIONAL CHERRY BLOSSOM FESTIVAL:

Important Dates and Signature Events

FESTIVAL DATES

March 20 - April 12, 2020

Tidal Basin Welcome Area
March 21-22; March 28-29;
April 4-5; April 11-12; Weekdays
during peak bloom



SIGNATURE EVENTS

Blossom Kite Festival
Saturday, March 28

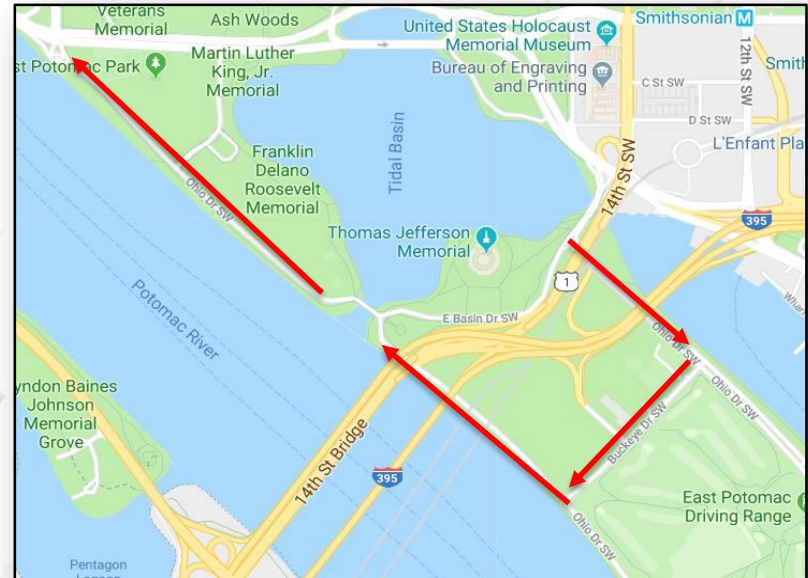
National Cherry Blossom
Festival Parade
Saturday, April 4

Credit Union Cherry Blossom
Ten Mile Run
Sunday, April 5

Petalpalooza
Saturday, April 11

NATIONAL CHERRY BLOSSOM FESTIVAL: Motorcoach Routing

- National Cherry Blossom Festival is one of the largest events for motorcoach activity in Washington, DC
- Changes will be in effect from March 21 to April 12 (subject to change)
- Areas are dedicated for active passenger loading and unloading, not parking





Arlington Memorial Bridge Alternate Routes



Additional Information:

George Washington
Memorial Parkway

<http://go.nps.gov/MemBridge>



NATIONAL PARK SERVICE UPDATES:

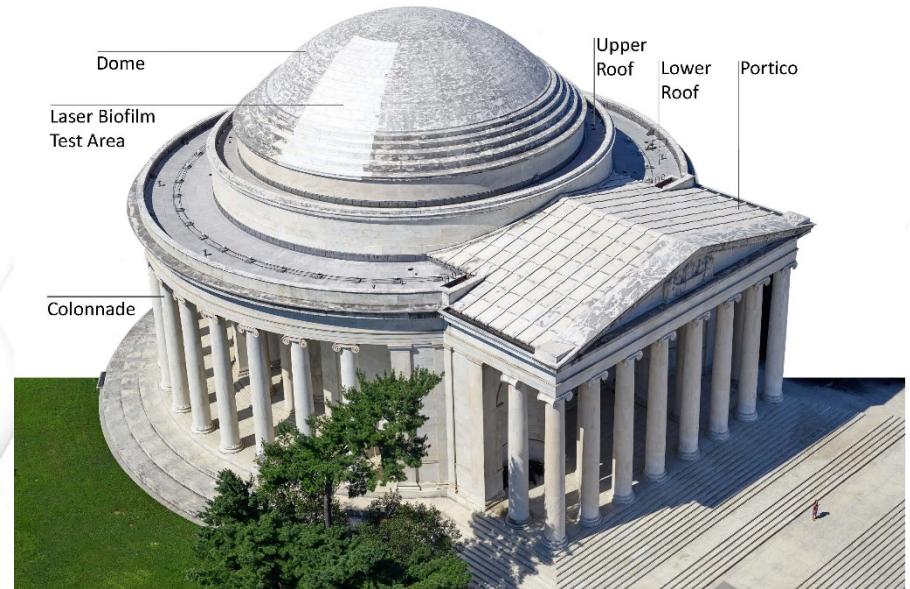
NPS PARKING METERS

- Tour bus parking on Independence Avenue (8) and Ohio Drive river-side (50) is metered.
- Loading and unloading will remain unmetered.
- Hains Point tour bus lot (11) will remain unmetered.
- Payment done through credit cards and Parkmobile cell phone app.
- Bus Charge: \$6.90/hour with a 3-hour limit
- DC parking enforcement officers will be enforcing the meters with US Park Police support.
- More information:
www.nps.gov/nama/planyourvisit/parking



NATIONAL PARK SERVICE UPDATES: JEFFERSON MEMORIAL REHABILITATIONS

- The National Park Service continues the 15-month project to restore the roofs, repair the stone, and clean the marble at the Thomas Jefferson Memorial.
- Access to the front of the memorial, including the steps, accessible route, chamber with the statue of Thomas Jefferson, exhibit area, restrooms and elevator will remain open to the public during the construction. The east side of the memorial will be closed for construction staging.



SMITHSONIAN UPDATES:

NATIONAL AIR AND SPACE MUSEUM

- The Museum's large-scale renovations of the building and gallery spaces continue. The first of the new galleries are expected to open in 2022, with final completion in 2025.
- The Museum will be open throughout the project, with approximately half of the galleries currently on view for the public. Popular artifacts currently on view include, the 1903 Wright Flyer, *Spirit of St. Louis*, and Neil Armstrong's Apollo 11 spacesuit.
- **Entrance:** All visitors must currently use the Jefferson Drive entrance (National Mall). A special entrance is available for groups with reserved tours and educational programs.
- **Motorcoach Drop-Off:** Bus unloading is limited to the segment of Jefferson Drive, stretching from the Museum entrance to 4th Street and should be used only for drop-offs.
- **Dining:** "Grab-and-go" options (sandwiches, salads, snacks) are available, as well as pulled pork sandwiches, hot dogs, and soup. Dining vouchers are available for groups of 10 or more.



airandspace.si.edu

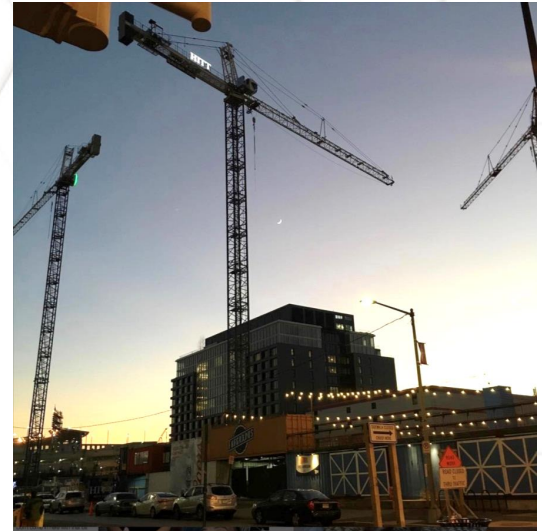
MOTORCOACH UPDATES:

DISTRICT DEPARTMENT OF TRANSPORTATION

Ongoing construction projects have transformed the District more rapidly than ever. DDOT's new Parking and Ground Transportation Division is working to maximize safe, efficient access to the District's cultural attractions.

DDOT reminds motorcoach operators and drivers to:

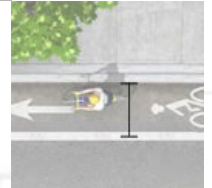
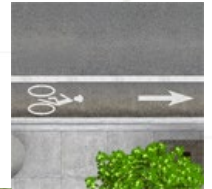
- Be aware of new or changed parking availability and restrictions
- Comply with posted signs
- Contact Destination DC or DDOT with questions



MOTORCOACH UPDATES:

VISION ZERO

The mission of the District Department of Transportation (DDOT) is to enhance the quality of life for District residents and visitors by ensuring that people, goods, and information move efficiently and safely with minimal adverse impact on residents and the environment.



MOTORCOACH UPDATES:

VISION ZERO

The District Department of Transportation (DDOT) announced ... Mayor Bowser's Vision Zero initiative, that will prohibit stopping, standing, parking, passenger loading and unloading, and other obstructions of bicycle lanes.



MOTORCOACH UPDATES:

VISION ZERO

"As the District continues to embrace multimodal transportation, we have to make sure that our regulations and practices protect all users of the roadway," said DDOT Director, Jeff Marootian. "These rules reinforce the Bowser administration's commitment to Vision Zero and eliminating traffic fatalities in the District."



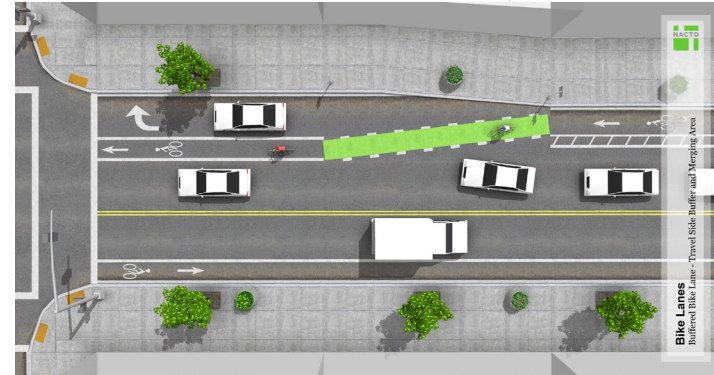
MOTORCOACH UPDATES:

VISION ZERO



- Vehicles may not enter bicycle lanes unless safely turning at an intersection, into a driveway or alley, or entering a legal parking space.
- Vehicles are not permitted to enter a bicycle lane in order to avoid conflict with other traffic.

- Vehicles are not permitted to enter a bicycle lane in order to load or unload passengers or freight.
- Vehicles are only allowed to stop in a bicycle lane when necessary to enter into a legal parking space or to follow the directions of a police officer.



MOTORCOACH UPDATES:

LOADING/UNLOADING REGULATIONS

DCMR 2401.1

If no curb space is available within a reasonable distance, a passenger vehicle may stand parallel and as near as practicable to other parked vehicles, only long enough to take on passengers who are actually waiting at the curb or to leave off passengers.



MOTORCOACH UPDATES:

LOADING/UNLOADING REGULATIONS

DCMR 2401.2

Unless prohibited by § 2402, a vehicle may stop parallel and as near as practicable to parked vehicles while loading; Provided, that the vehicle while so parked will not unreasonably impede or interfere with orderly two-way traffic, or on a one-way street, that at least one lane is kept open for moving traffic.



MOTORCOACH UPDATES:

LOADING/UNLOADING REGULATIONS

DCMR 2401.3

On any street, highway, or any portion of a street or highway, where parking is prohibited but stopping and standing are not prohibited, passenger vehicles may stop momentarily to load and unload passengers, and any vehicle may stop long enough to actually load and unload materials.



MOTORCOACH UPDATES:

NEW ON-STREET METERED PARKING

DDOT's goal is to facilitate access to major cultural attractions and visitor-focused amenities while creating safe, convenient parking for tour bus drivers.

Priorities:

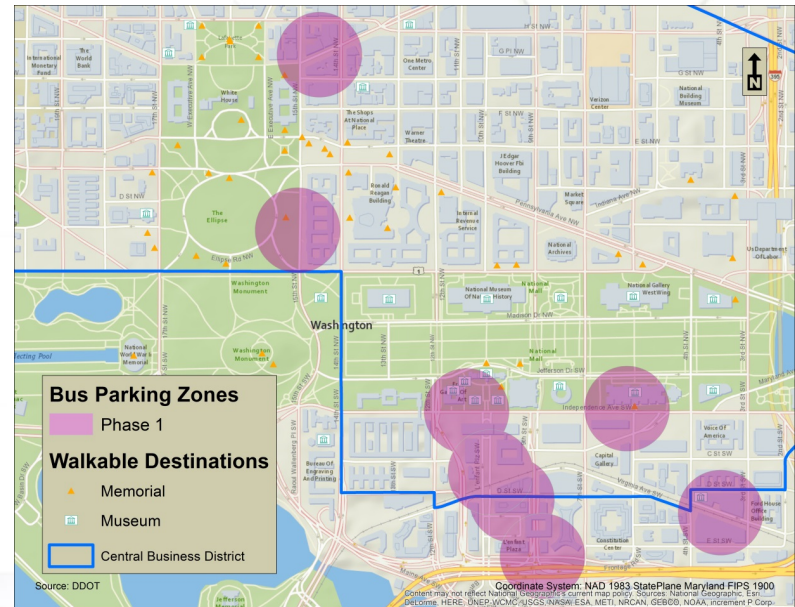
- Increase access to the National Mall and nearby destinations including monuments, memorials, museums, restaurants, and shopping
- Provide access for picking up and dropping off visitors
- Simplify payment options at on street-parking facilities



MOTORCOACH UPDATES:

NEW ON-STREET METERED PARKING

- The White House / The Ellipse
 - New York Avenue NW
 - 15th Street NW
- The National Mall
 - Independence Ave. SW
- L'Enfant Plaza / Spy Museum
 - L'Enfant Plaza SW
 - Frontage Road SW
- Museum of the Bible
 - Virginia Ave. SW

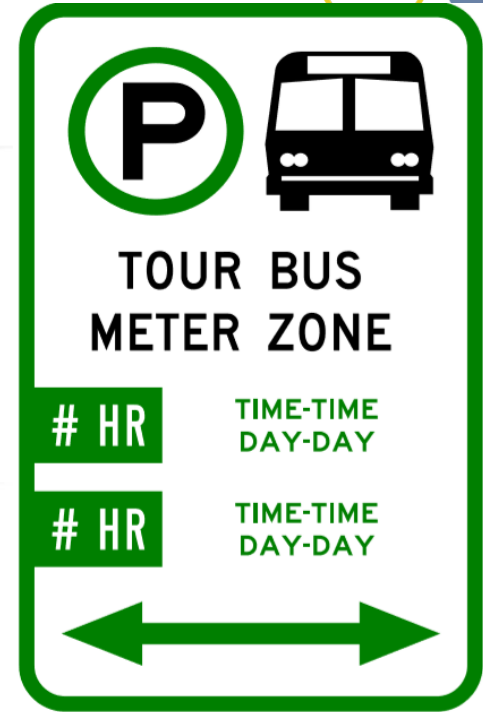


MOTORCOACH UPDATES:

NEW ON-STREET METERED PARKING

Parking Availability and Logistics

- Each bus parking zone will allow between 1 hour and 3 hours of paid parking during the day.
- Hours will vary between locations, and some will be rush hour restricted.
- Each zone will feature a multi-space meter with pay by phone technology.
- Full details including maps will be made available through goDCgo.



Park**mobile**

A Smart

MOTORCOACH UPDATES:

NEW ON-STREET METERED PARKING

Pay By Phone Parking

- Operators will have the options to allow:
 - Drivers to pay by phone
- OR
- Drivers can relay parking information to dispatchers to pay remotely

MUSEUM OF THE BIBLE

Motorcoach Parking in the District of Columbia

Museum of the Bible

300 block of Virginia Ave. SW

Overview

Visitors to the new Museum of the Bible can enjoy easy access to the museum with ample metered tour bus parking. Additionally, the National Mall and the newly redeveloped Waterfront neighborhood are a short walk away. Visitors can access the Federal Center SW Metro station just around the corner.



- 7 parking spaces (approx.)
- \$6.90/hr
- 2-hour limit
7 a.m. - 6:30 p.m.
Monday - Sunday

Payments can be made by drivers at multi-space meters or by drivers and dispatchers via mobile app.

A map of all motorcoach parking locations and additional information about motorcoach parking and operations is available at www.goDCgo.com/motorcoach.

MOTORCOACH UPDATES:

NEW ON-STREET METERED PARKING

Pay By Phone Parking

- Operators will have the options to allow:
 - Drivers to pay by phone

OR

- Drivers can relay parking information to dispatchers to pay remotely

L'ENFANT PLAZA

OVERNIGHT METERED PARKING AVAILABLE



Motorcoach Parking in the District of Columbia

L'Enfant Plaza

300 block L'Enfant Plaza SW
(South of Independence Avenue SW,
North of Heritage Road SW)

Overview
This location provides ample motorcoach parking with easy access to the local court at L'Enfant Plaza, the National Mall, the L'Enfant Plaza and Smithsonian Metro stations, The Wharf, and the new location of the International Spy Museum.

Payments can be made by drivers of multi-space meters or by drivers and dispatchers via mobile app.



- 12 parking spaces (approx.)
- \$6.70/hr
- 2-hour limit
7 a.m. - 6:30 p.m.
Monday - Saturday
- 12.5-hour limit (overnight)
6:30 p.m. - 7 a.m.
Monday-Saturday



A map of all motorcoach parking locations and additional information about motorcoach parking and operators is available at www.goDCgo.com/motorcoach.

d. GOVERNMENT OF THE DISTRICT OF COLUMBIA
MURIEL BOWSER, MAYOR

MOTORCOACH UPDATES:

NEW ON-STREET METERED PARKING

Pay By Phone Parking

- Operators will have the options to allow:
 - Drivers to pay by phone
- OR
- Drivers can relay parking information to dispatchers to pay remotely

FRONTAGE ROAD

OVERNIGHT METERED PARKING AVAILABLE



Motorcoach Parking in the District of Columbia

Frontage Road

700-700 blocks of Frontage Road SW
(south of the U.S. Department of Housing and Urban Development building, access via 7th Street SW)



Overview

Frontage Road provides direct access to L'Enfant Plaza, the new International Spy Museum, and the National Mall. The Smithsonian and L'Enfant Plaza Metro Stations as well as the new Knight development on Maine Avenue SW are short walks away. Buses may park overnight at this location.

Payments can be made by drivers of multi-space meters or by drivers and dispatchers via mobile app.



- 6 parking spaces (approx.)
- \$4.95/hr
- 3-hour limit
7 a.m. - 6:30 p.m.
Monday-Sunday
- 12.5-hour limit (overnight)
6:30 p.m. - 7 a.m.
Monday - Saturday



A map of all motorcoach parking locations and additional information about motorcoach parking and operators is available at www.godcga.com/motorcoach.

d. DC GOVERNMENT OF THE DISTRICT OF COLUMBIA
MUREL BOWSER, MAYOR

MOTORCOACH UPDATES:

NEW ON-STREET METERED PARKING

Pay By Phone Parking

- Operators will have the options to allow:
 - Drivers to pay by phone
- OR
- Drivers can relay parking information to dispatchers to pay remotely

THE WHITE HOUSE

Motorcoach Parking in the District of Columbia

The White House

1400 block New York Ave. NW



Overview
One block east of the White House, this location is ideal for tour groups looking to snap photos and grab a quick bite. Access to I-395, I-466, and Route 30 makes this a great first or last stop of the day. Additionally, the McPherson Square and Metro Center stations are within walking distance.

Payments can be made by drivers at multi-space meters or by drivers and dispatchers via mobile app.



- 5 parking spaces (approx.)
- \$6.90/hr
- 1-hour limit
- 7:00 a.m. - 6:00 p.m.
7:00 p.m. - Midnight
Monday - Friday
- 7:00 a.m. - Midnight
Saturday - Sunday



A map of all motorcoach parking locations and additional information about motorcoach parking and operators is available at www.goDCgo.com/motorcoach.

d.  GOVERNMENT OF THE
DISTRICT OF COLUMBIA
MURIEL BOWSER, MAYOR

GROUP TRAVEL: MOTORCOACH PARKING LOCATIONS

THE UNION STATION BUS TERMINAL

- Designed to accommodate a number of tour and charter buses and offers convenient drop off locations for tour groups. There are 32 bus spaces available daily and parking permits are issued on a first come, first serve basis. Only reservations are guaranteed a parking space.
- Contact: businfo@uspgllc.com
- Website: <https://www.unionstationdc.com/parking/>

NATIONAL ZOO - PARKWHIZ

- Convenient 25-space onsite parking lot for buses and motor coaches at the Smithsonian National Zoo in Woodley Park neighborhood.
- Parking is extremely limited at the Zoo and lots fill early during the spring and summer months.
- Open from Monday to Friday only.
- You must exit before 5PM or your vehicle will be locked in.
- Website: <https://www.parkwhiz.com/the-smithsonian-s-national-zoo-parking/>

GROUP TRAVEL: MOTORCOACH PARKING LOCATIONS

SPOT HERO

- Can only be booked directly
- Contact: Steve Guevara,
steven.guevara@spothero.com

Address	Availability	Rate (All Day)	Rate (24-Hours)	Restrictions
5255 Western Ave NW	5 Buses +	--	\$100	
66 New York Ave NE	25 Buses	--	\$100	
601 L St SE	5 Buses	--	\$85	Weekends only; No availability during National or DC United games.
1880 2 nd St SW	35 Buses	\$50	\$75	No bus parking during National or DC United games.
Union Station	5 Buses	--	\$75	

All rates are subject to change

MOTORCOACH UPDATES:

ELECTRONIC LOGGING DEVICES

ELD Tip: No More than 10 Hours of total driving time per day and 15 hours On-Duty – WATCH YOUR ITINERARY!



MOTORCOACH UPDATES:

HOURS OF SERVICE

- Be good partners!
- Single or Multi-Day Charters – review itineraries before trip approval/price quoting
 - Split tours
 - Second drivers
 - Trip Start/Re-Start Times
- Stage Drivers
 - Hotel Room
 - Driver Day Rooms
- Work with Bus Operators HQ to Modify Trips
- No Extra Duties for Drivers
- No “Off-the-Books” Activities

MOTORCOACH UPDATES:

Do's & Don'ts

DRIVER DO'S!

- Communicate with your customers
- Make sure everyone has collected appropriate belongings before departure
- Ensure unloading occurs at a specified location onto a sidewalk or safe zone
- Read the Signs!



MOTORCOACH UPDATES:

Do's & Don't's

DRIVER DON'T'S!

- Double Park
- Park in a Bus Meter Zone longer than the paid amount of time, or feeding the meter
- Idle your engine for more than 3 minutes
- Idle your engine for more than 3 minutes
- Stop, load or park on streets with rush hour prohibitions
- Park in metered areas when the meters are in effect
- Park adjacent to any residential property, school, playground, hospital, church or park

*****A standing vehicle that is not loading or unloading passengers is considered to be "parked" regardless of whether the engine is on. Fine violation is \$250.*****

*****Be prepared for inspections - May 5-7, CVSA Roadcheck***

TRIP PERMITS:

IRP Regulations

INTERNATIONAL REGISTRATION PLAN (IRP)

- The IRP is a plan for apportioned registration, based on mileage, for commercial vehicles engaged in interstate operations in member states.
- Effective January 1, 2016, the IRP has been amended to remove the exemption for buses used in the transportation of chartered parties.
- Buses traveling outside their home state are required to get apportioned tags or obtain a trip permit.
- Buses with apportioned tags are considered IRP registered vehicles and are able to operate in any IRP jurisdiction without purchasing a trip permit.

TRIP PERMITS: Procedures

WASHINGTON, DC TRIP PERMITS

- Non-apportioned vehicles must obtain a trip permit
- Can be processed at www.dmv.dc.gov
- Must have Federal Tax ID to register
- \$50 for 6 days
- Contact: 202-729-7083

CUA UPDATES: ENTRANCE FEE PLAN HIGHLIGHTS

- Proposed program is delayed.
- Maintain vehicle capacity-based pricing for entrance fees.
- Will reconsider CUA management fees.
- New motorcoach vehicle size category for 47+ seats.
- Expected to go into effect January 1, 2021, status quo till then.

CUA UPDATES: ROAD-BASED TOUR CUA PLAN HIGHLIGHTS

- Online CUA application and annual reporting.
- Centralized application process – apply once for multiple parks.
- Reduced application fees (tiered pricing).
- No CUA management fees for parks with entrance fees.
- Expected to go into effect January 1, 2021.

CUA UPDATES:

ROAD-BASED TOUR CUA PLAN HIGHLIGHTS

- CUA annual application fee
 - \$300 for 1 park
 - \$50 each additional park
- CUA management fee
 - \$0 for parks with entrance fees
 - TBD for parks without entrance fees – no fees until 2022
- Some Parks will have waivers and be exempt from fees
 - List should be available online 15 parks (recently retired)
 - National Mall expected to be added
- <https://www.nps.gov/aboutus/commercial-use-authorizations.htm>

WHY HIRE A PROFESSIONAL TOUR GUIDE?

- Thorough planning is key but delivery is crucial
Escort, guide and coach operator team
- A local guide knows:
The “ins and outs” of the area
Local routes, customs, laws
Stories and anecdotes....not just the facts
- Destination DC can suggest trusted companies to provide guide suggestions



MOTORCOACH APPRECIATION: DC Loves Buses Day

DC LOVES BUSES DAY - MAY 7, 2020

- Thank bus companies and group tour operators for following the DC Anti-Idling Law and for making Washington, DC one of the top group tour destination in the US
- Latest regulations and motorcoach updates are shared with drivers
- DC Hospitality teams greet drivers at key locations in the city
- Each driver receives:
 - Lunch
 - Gift Bag
 - Bus Cling
 - Nomination for prize drawing if following anti-idling law



GROUP TRAVEL:

Stay in the Know

ROAD CLOSURES

Utilize the following resources to stay informed on city road closures:

- ddot.dc.gov/newsroom – press releases on road closures and city developments
- godcgo.com – sign up for newsletter and receive latest updates on city transportation alerts
- **Destination DC Email Updates** - email Lindsay Hill, Lindsay@Washington.org, if you would like to be added to list.

GENERAL SECURITY INFORMATION

Follow these two sites, for the latest developments and to monitor news:

- hsema.dc.gov – you can sign up here for AlertDC, the official District of Columbia communications system that sends emergency alerts, notifications, and updates to your devices. This system enables the District to provide you with critical information in situations such as traffic conditions, government closures, public safety incidents and severe weather.
- washingtonpost.com – latest news and information about local developments

GROUP TRAVEL:

Stay in the Know

NATIONAL 9-11 PENTAGON MEMORIAL

- Currently closed for lighting repairs and construction until late May 2020. Projected completion date is May 29.
- The project will address re-occurring failures of the lighting systems in the pools under the memorial benches and replace the entire electrical system at the Pentagon Memorial.
- The Pentagon Chapel will not be affected by this project.

U.S. CAPITOL VISITOR CENTER EXHIBITION HALL

- Exhibition Hall is currently closed until January 2021
- Tours are conducted as normal

GROUP TRAVEL:

Stay in the Know

EISENHOWER MEMORIAL

- Opens May 8, 2020 – 75th Anniversary of V-E Day
- Designed by world-renowned architect Frank Gehry, the memorial encapsulates Eisenhower's legacy in a four-acre urban park at the base of Capitol Hill. Gehry's unique vision is a grand new civic space in the heart of the nation's capital. The memorial features a one-of-a-kind stainless steel tapestry depicting beaches of D-Day, heroic-sized bronze sculptures, and stone bas reliefs.



GROUP TRAVEL:

Stay in the Know

PLANET WORD

- Opening May 31, 2020
- Large groups will have small per person fee
- Booking requests should be emailed to Rebecca Roberts, rebecca.roberts@planetwordmuseum.org
- Meant to inspire and renew a love of words and language through unique, immersive learning experiences

NATIONAL MUSEUM OF THE U.S. ARMY

- Opening June 4, 2020
- Free tickets will be required. The museum is taking pre-reservation requests through a form at: <https://armyhistory.org/group-ticketing-requests/>
- You can also send questions to grouptours@armyhistory.org

GROUP TRAVEL:

Stay in the Know

IMPORTANT DATES

- U.S. Holocaust Memorial Museum – FEBRUARY 29
- Release of June/July/August tickets
- POLICE WEEK – MAY 10-16
- PASSPORT DC – MAY 1-31
- Around The World Embassy Tour – May 2
- Short Cut to Europe: European Union Embassies' Open House – May 9
- Smithsonian Folklife Festival – JUNE 24-28 & JULY 1-5
- 2020 areas of focus: Culture & Environment: Brazil, United Arab Emirates, Earth Optimism, Solar Decathlon

GROUP TRAVEL:

Stay in the Know

DC LOVES GROUPS!

STAY CONNECTED WITH DESTINATION DC

LIKE Us on Facebook:

[facebook.com/DCLovesGroups](https://www.facebook.com/DCLovesGroups)

Quarterly Newsletter:

Released by end of March

Phone and Email:

Lindsay Hill, Senior Manager, Tourism Sales

Your Dedicated Contact

202-789-7088

Motorcoach Hotline 1-855-67-BUSES (28737)

Lindsay@Washington.org



visit **WASHINGTON.ORG**

THANK YOU

